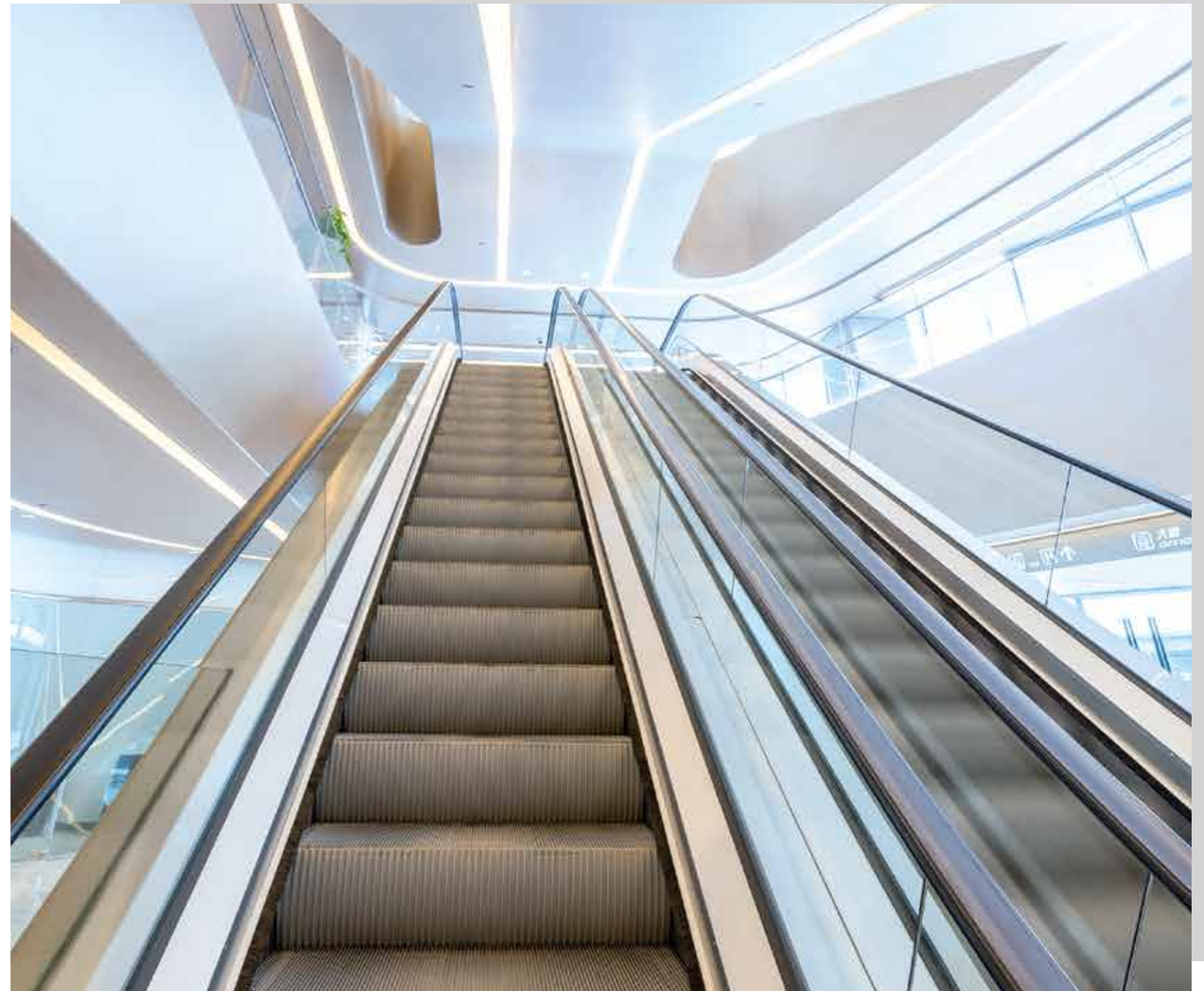
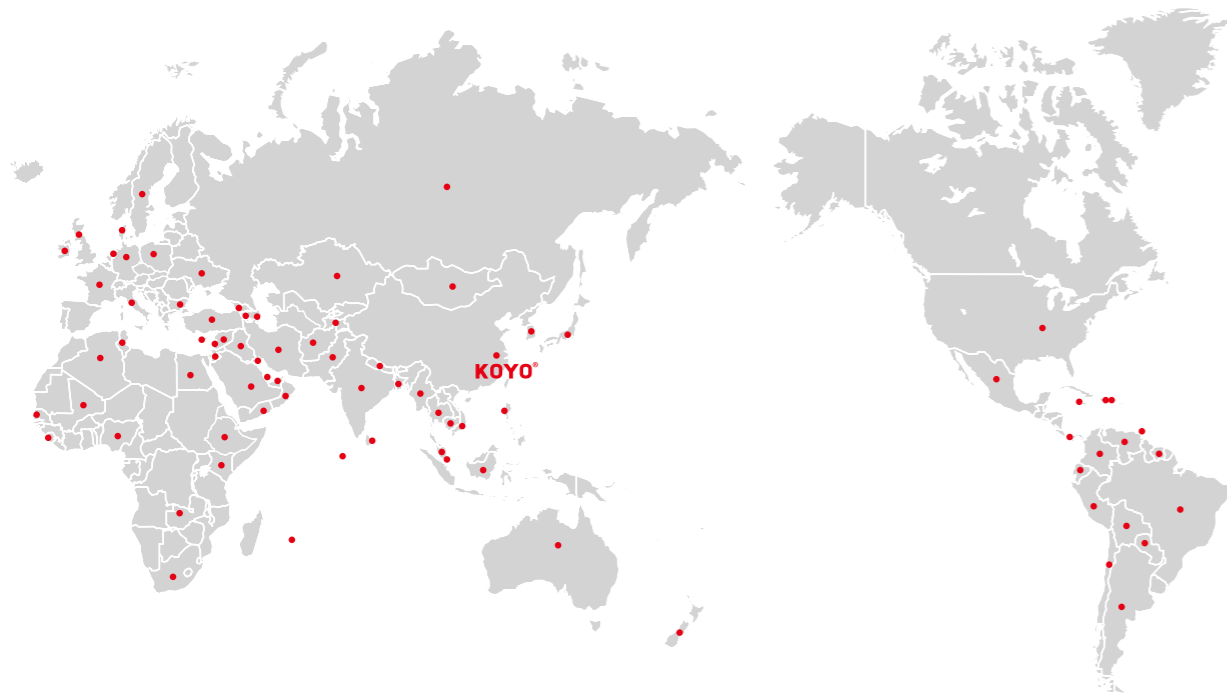




KOYO® Elevator
Lead The Best Life

ESCALATOR



KOYO® Elevator
Lead The Best Life

KOYO Elevator Co., Ltd.

Tel: +86-512-5764 6238 / 5706 5517

Add: No.3 Caimao Rd, Zhoushi, Kunshan, 215313 China.

E-mail: info@koyocn.com

Web: www.koyocn.com



Scan the QR Code
To follow KOYO



www.koyocn.com

FOREWORD

We will accompany and guard you safely to travel with utmost care.

We pass every piece of love and life with care. Whenever you touch lift button and make a step, love shall be around with you.

We have rock-solid guarantee of safety, with attentive daily accompany filled with warm. We fully participate in your splendid life. We exist around the world, we are responsible for you and us.

CONTENTS

- 02 Company Profile
- 04 KOYO Escalator Description
- 07 KOYO Escalator Control Cabinet
- 09 KOYO Escalator Material
- 12 Standard and Optional Function
- 14 Option Form for Escalator Specification
- 15 Escalator Specifications & Parameters
- 16 KYS/C 230 Commercial Escalator
- 17 KYS/C 235 Commercial Escalator
- 18 KYS/C 330 Commercial Escalator
- 19 KYXF/KYH 330 Public Transport Escalator
- 20 KYXF/KYH 323 Public Transport Escalator
- 21 KYXF/KYH 327 Public Transport Escalator
- 22 KYPS12 Commercial Passenger Conveyor
- 23 KYPF12 Commercial Passenger Conveyor
- 24 KYPH0 Public Transport Passenger Conveyor



COMPANY PROFILE

Lead the best life

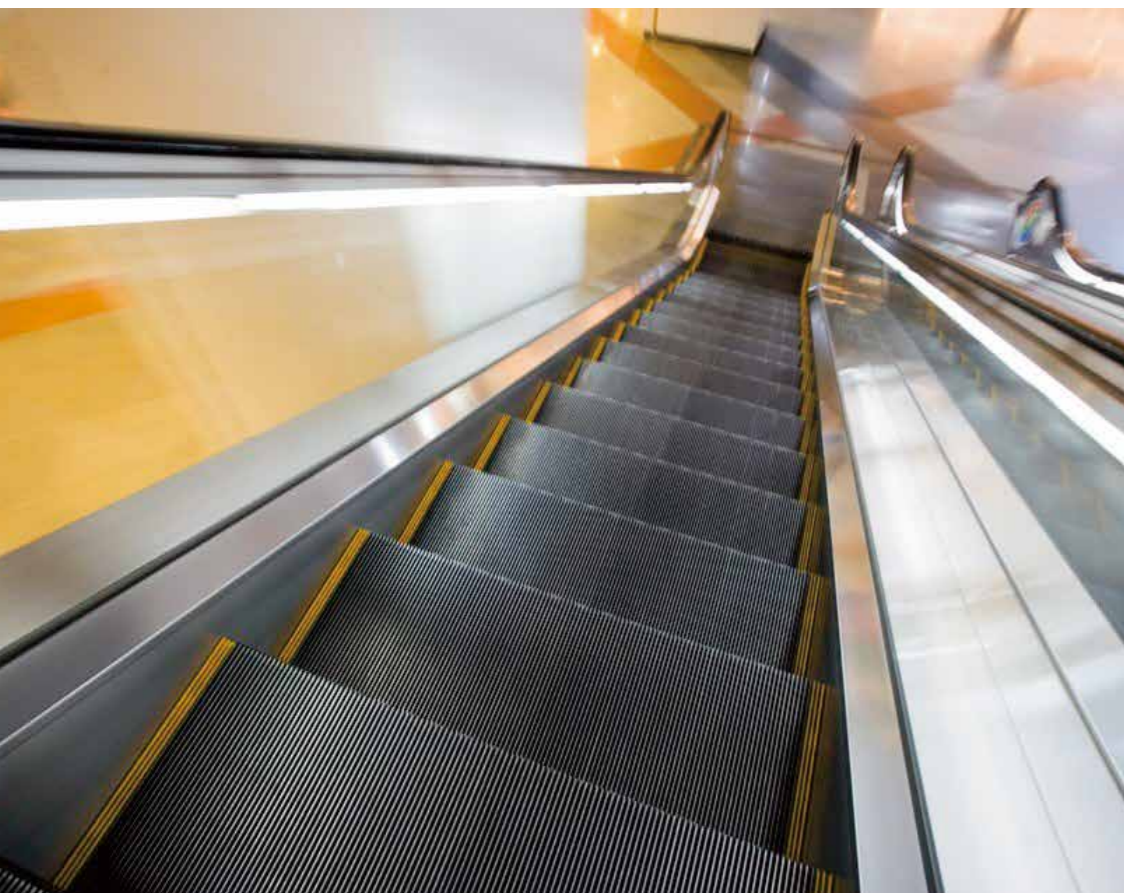
KOYO®, as an outstanding representative of Chinese elevator companies, is specialized in designing, researching, manufacturing, selling, installing and maintaining. Combining advanced technique with Chinese traditional aesthetic, KOYO team with its own main board and control system, try their best to perfect products. Since 2002, KOYO products have been exported over 98 countries including America, South Africa, Germany, France, Italy, England and so on.

“Created in China”-KOYO, well-known Brand across the world

KOYO creates the perfect service experience with first-class quality of the staff. The perfect fusion of technology creates the world’s leading elevator products, which is able to bring its products all over the world. KOYO has rewritten Chinese history and created the world famous elevator brand.

Using “No.1” achieves “Created in China”

From “Made in China” to “Created in China”, KOYO creates the perfect products with enthusiasm, bears fruit with its effort, and gets proud achievements. KOYO has completed world “NO.1” one by one, set the example for China private enterprises, and created the world’s sixteen “No.1”.



KOYO ESCALATOR DESCRIPTION

KOYO escalators and passenger conveyors, complying Europe latest EN115 & China GB16899-2011 standards, are adopted new materials and advanced technology to carry on its design and manufacture. They have been operating smoothly, low noise and high reliability, high structure. They are durable and easy to maintain.

Because of its superior design concept and advanced manufacturing process, KOYO escalator and passenger conveyor with exquisite structure, excellent step road, delicate lead way and elegant shape.

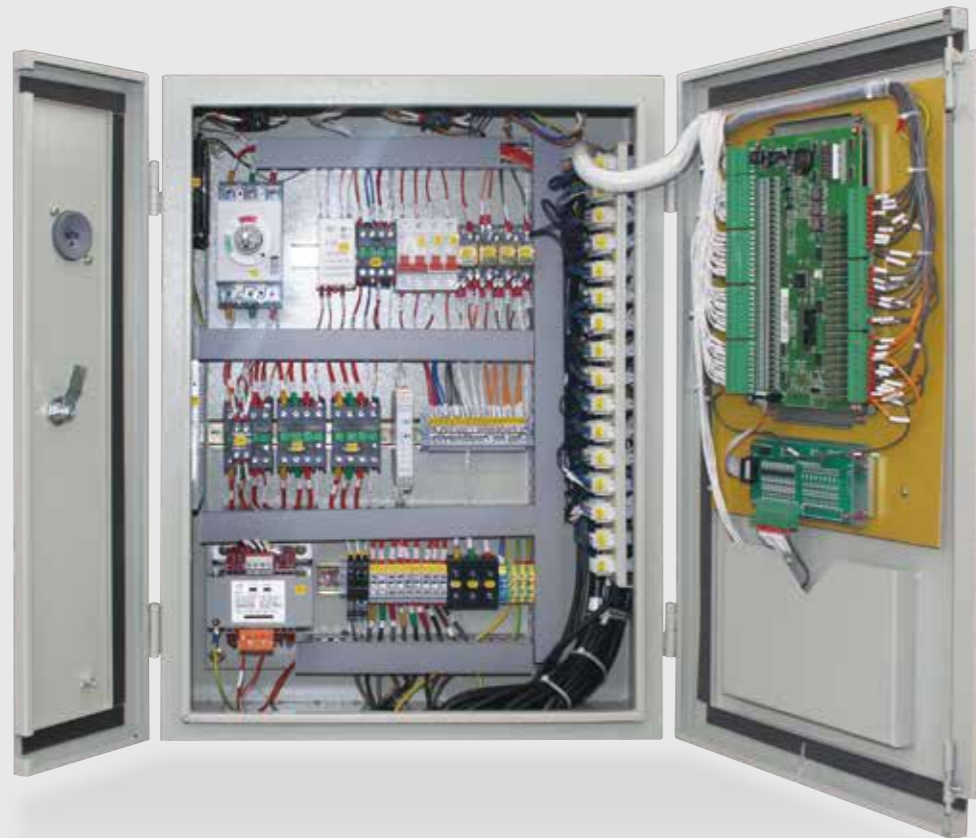
KOYO Escalator Description

KOYO escalator and passenger conveyor has full range specifications, beautiful shape, flexible layout which are widely used in shopping malls, supermarkets, subways, airports, exhibition centers etc.



ISO9001:2008 / ISO14001:2004 / OHSAS18001:2007

European Certification / Energy-Saving System



KOYO ESCALATOR CONTROL CABINET

According to the requirement of modern industrial product design, KOYO escalator control cabinet applies the golden section design method for the section size of the cabinet and each part, which makes the cabinet be elegant and new appearance. In view of the heat radiating problem, the heat radiating holes on the upper and below part of the cabinet has been designed. When the electrical components generate heat, the heat will be exhausted through the upper holes as the heat generates and the cold wind will consistently enter into the cabinet through the below holes, which makes the sealed cabinet become an air duct to realize the heat radiating purpose.

Koyo escalator control cabinet with sealing design is approved by third testing party and labeled as security level of IP54, which can be used in different working condition. The cabinet door and operating handle of breaker or isolating switch is designed with a mechanical interlock, the handle can be opened only when the door is in the subsection position which improves the safety of operator.

KYM08E301 embedded automatic escalator control board

KYM08E301 embedded automatic escalator control board is on the basis of ARM 32 microprocessor which is independently developed by KUNSHAN KOYO Elevator Co., Ltd is a product of high technology and delivers a stable quality performance and high capacity of anti-interference. This product has the following characteristics.

- ARM 32 embedded micro processor
- Basic points: 36 points input and 24 points output and extended to 68 points input
- Frequency conversion, star-delta is available to choose, operation and repair model is available to choose.
- Key input, LED display, parameters to be set up and history record to be stored.
- Automatic diagnosis of defect and history record can be stored with capacity of 1000 items.
- Long-distance control communication interface (RS485 and CAN)
- Real-time clock for power failure protection.

Escalator programmable electronic safety related systems (PESSRAE)

The systems meet with European standard: EN115-1:2008+A1:2010 and IEC61508 on the corresponding requirement of the programmable electronic safety related systems.

The system uses the security controller: G9SP, the controller itself is certified by TUV safety protection comes to SIL3 level. The system uses dual channel self-diagnosis and other advanced monitoring method, which also has passed the testing from the Rhine technology (Shanghai) Co., LTD. Safety protection comes to SIL2 level, and getting CE certificate. The system mainly has the following features:

- Design according to the needs of SIL;
- Multiple redundancy, monitoring of each input electric for every security monitoring (main engine speed, escalator step missing monitor, handrail belt speed detection, etc.)
- Superior system self testing;
- Compatible with all kinds of system, PLC, PC board system, etc.;
- Good electromagnetic compatibility EMC;
- Systematic solution making KOYO escalator control products more outstanding.

KOYO ESCALATOR MATERIAL

• The Material of Inner and Outer Decking and Skirting

Comfort and Noble are the most light spot of KOYO escalator based on the stability and safety.



Hairline
Stainless Steel



Hairline Teflon
Stainless Steel



Skirting with Hairline
Stainless Steel



Skirting with the
Hairline Teflon Finished
Stainless Steel

• Handrail Color Option



Black



Red



Orange



Brown



Green

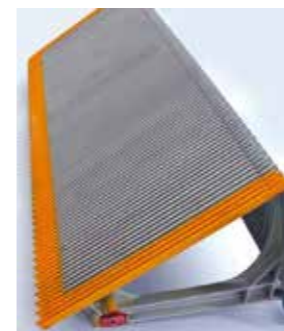


Blue



Gray

• Step



Die-cast Aluminum step with
yellow painted frame



Stainless Steel step with
yellow plastic frame



Aluminum step with
yellow plastic frame

KOYO ESCALATOR MATERIAL

• The Material Option of Truss



Truss/Painted Angle Steel



Truss/Hot-dip Galvanizing

• Landing Plate



Aluminum



Punched Stainless Steel

• Comb

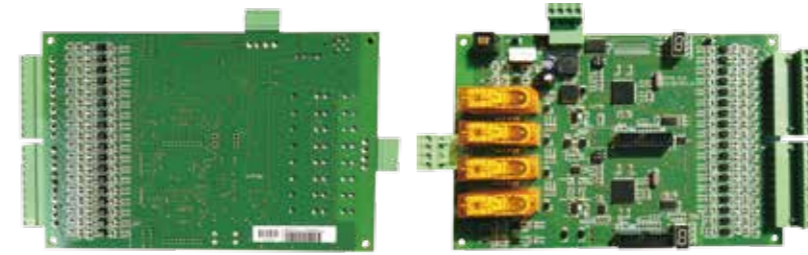


Aluminum

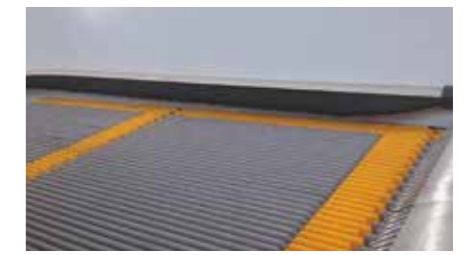


Resin

• Safety Function Extended Board (PESSRAE)



• Skirting Brush



• The Material Option of Outside Cladding



Glass



Hairline Stainless Steel

• Anti-Creeping Device



• Balustrade Lighting



• Skirting Lighting



• Handrail Bracket

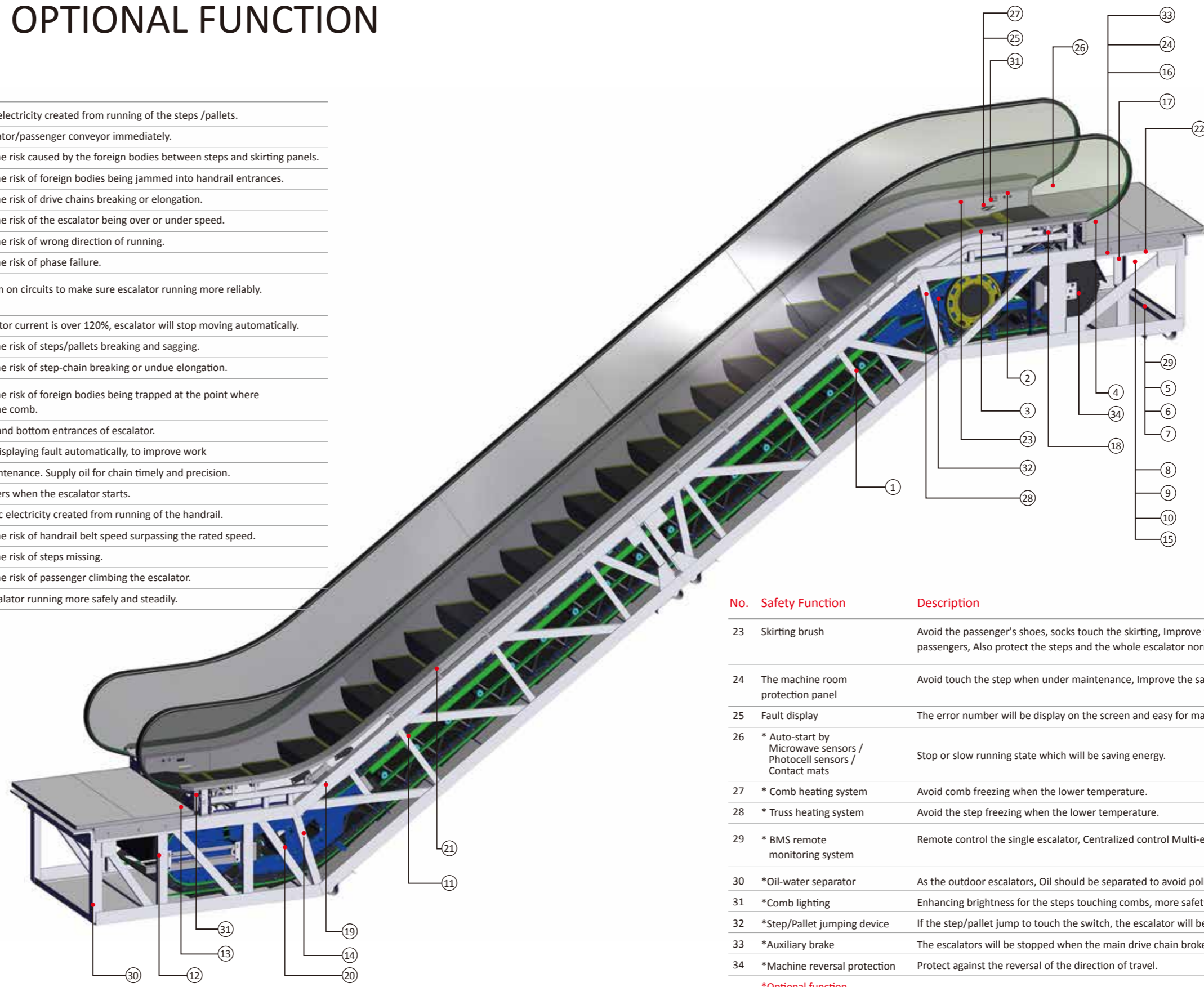


Aluminum

Hairline Stainless Steel

STANDARD AND OPTIONAL FUNCTION

No.	Safety Function	Description
01	Anti-static brush	Eliminates static electricity created from running of the steps /pallets.
02	Emergency stop button	To stop the escalator/passenger conveyor immediately.
03	Skirting protection	Protect against the risk caused by the foreign bodies between steps and skirting panels.
04	Handrail entrance protection	Protect against the risk of foreign bodies being jammed into handrail entrances.
05	Broken drive-chain protection	Protect against the risk of drive chains breaking or elongation.
06	Over/Under speed monitor	Protect against the risk of the escalator being over or under speed.
07	Anti-reversal protection	Protect against the risk of wrong direction of running.
08	Default phase protection	Protect against the risk of phase failure.
09	Electric circuit protection Motor overload and	Double protection on circuits to make sure escalator running more reliably.
10	overheat protection	Act when the motor current is over 120%, escalator will stop moving automatically.
11	Step/Pallet sagging protection	Protect against the risk of steps/pallets breaking and sagging.
12	Broken step-chain protection	Protect against the risk of step-chain breaking or undue elongation.
13	Comb protection	Protect against the risk of foreign bodies being trapped at the point where the step enters the comb.
14	Step gap illumination	To show the top and bottom entrances of escalator.
15	Fault display	Diagnosing and displaying fault automatically, to improve work
16	Auto Lubrication System	Efficiency on maintenance. Supply oil for chain timely and precision.
17	Start alarm device	To warn passengers when the escalator starts.
18	Handrail anti-static protection	To eliminate static electricity created from running of the handrail.
19	Handrail belt speed monitor	Protect against the risk of handrail belt speed surpassing the rated speed.
20	Step missing protection	Protect against the risk of steps missing.
21	*Anti-creeping device	Protect against the risk of passenger climbing the escalator.
22	*PESSRAE system	To make sure escalator running more safely and steadily.



No.	Safety Function	Description
23	Skirting brush	Avoid the passenger's shoes, socks touch the skirting, Improve the safety of the passengers, Also protect the steps and the whole escalator normal operation.
24	The machine room protection panel	Avoid touch the step when under maintenance, Improve the safety of the passengers.
25	Fault display	The error number will be display on the screen and easy for maintenance.
26	* Auto-start by Microwave sensors / Photocell sensors / Contact mats	Stop or slow running state which will be saving energy.
27	* Comb heating system	Avoid comb freezing when the lower temperature.
28	* Truss heating system	Avoid the step freezing when the lower temperature.
29	* BMS remote monitoring system	Remote control the single escalator, Centralized control Multi-escalators.
30	*Oil-water separator	As the outdoor escalators, Oil should be separated to avoid pollute the environment.
31	*Comb lighting	Enhancing brightness for the steps touching combs, more safety.
32	*Step/Pallet jumping device	If the step/pallet jump to touch the switch, the escalator will be stopped.
33	*Auxiliary brake	The escalators will be stopped when the main drive chain broken or overspeed.
34	*Machine reversal protection	Protect against the reversal of the direction of travel.

*Optional function

OPTION FORM For Escalator Specification

		Indoor		Outdoor	Public Transport
		Slim Type	Commercial Type	Commercial Type	Type
Handrail Belt	Synthetic rubber (black)	▲	▲	▲	▲
	Other colors	△	△	△	△
Handrail Bracket	Hairline Stainless Steel	▲			
	Aluminum Alloy		▲	▲	▲
Balustrade Panel	Colorless Transparent Tempered Glass	▲	▲	▲	▲
	Colored Transparent Tempered Glass	△	△	△	△
	Inclined Hairline Stainless Steel		△	△	△
Inner & Outer Decking	Hairline Stainless Steel	▲	▲	▲	▲
	Teflon Rnished Steel Plate	△	△	△	△
	Teflon Rnished Stainless Steel	△	△	△	△
Skirting	Hairline Stainless Steel	▲	▲	▲	▲
	Teflon Rnished Steel Plate	△	△	△	△
	Teflon Rnished Stainless Steel	△	△	△	△
Step	Stainless Steel with yellow plastic frame	△	△		
	Aluminum with yellow painted frame	△	△	△	△
	Aluminum with yellow plastic frame	▲	▲	▲	▲
Comb	Synthetic Resin (Yellow)	△	△	△	△
	Aluminum Alloy	▲	▲	▲	▲
Landing Plate	Punched Stainless Steel	▲	▲		
	Etching Stainless Steel	△	△	△	△
	Aluminum Alloy	△	△	▲	▲
Truss	Painted Angle Steel	▲	▲		
	Hot-dip Galvanizing Angle Steel	△	△	▲	▲
Outside Cladding	Painted Steel (colors for choice)	△	△	△	△
	Hairline Stainless Steel	△	△	△	△
	Tempered Glass	△	△	△	△

Note: ▲ Standard, △ Optional



ESCALATOR SPECIFICATIONS & PARAMETERS

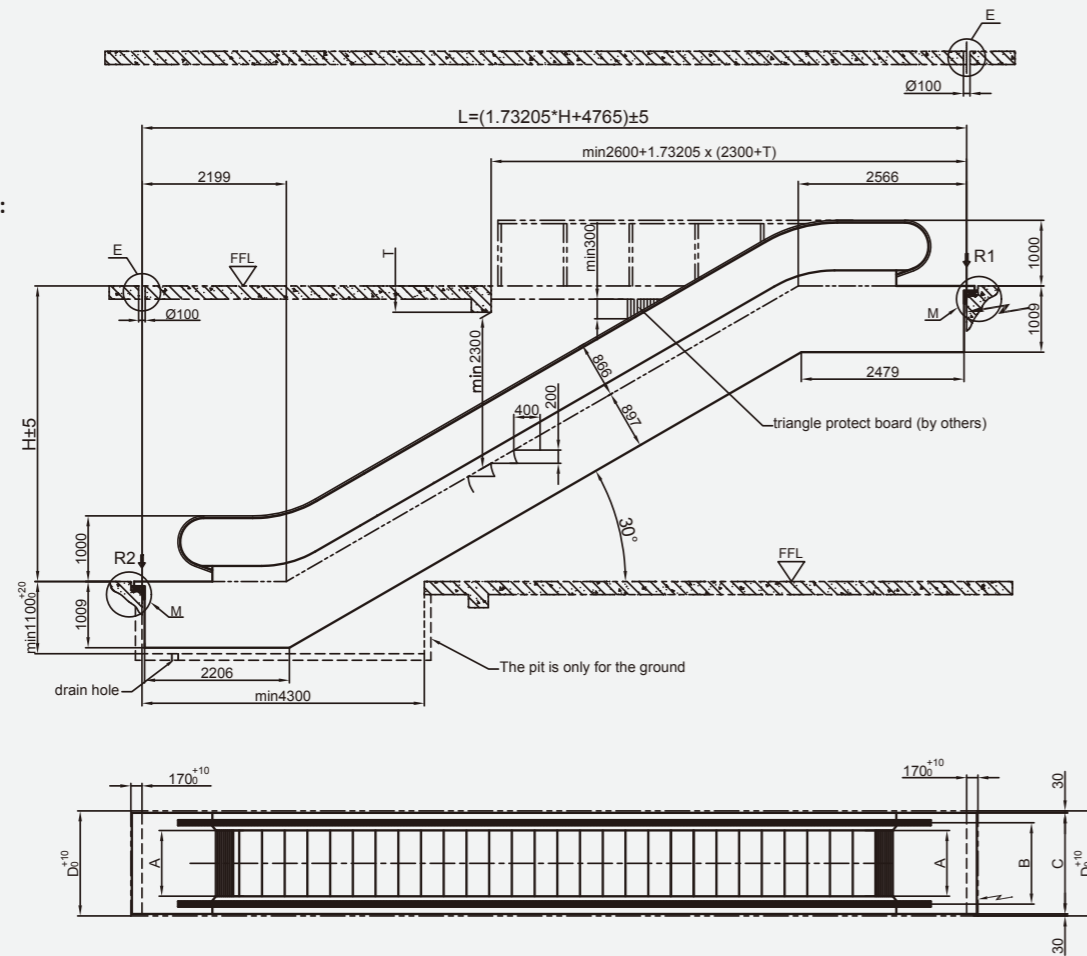
• KYS/C 230 Commercial Escalator | Drawing

Rise:
Max. 6000

Incline :
30°

Horizontal Steps :
2

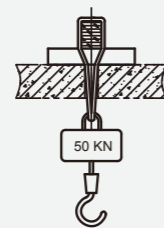
Step Width :
600/800/1000



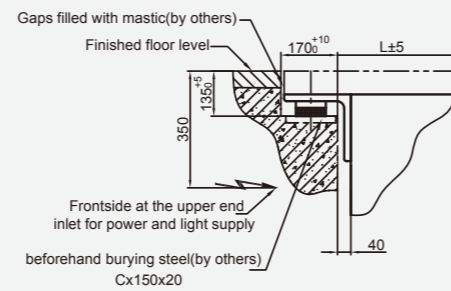
Model	KYS/C230-600	KYS/C230-800	KYS/C230-1000
A: Step Width	600	800	1000
B: Handrail Center Distance	838/910	1038/1110	1238/1310
C: Width of Escalator	1140/1200	1340/1400	1540/1600
D: Width of Pit	1200/1260	1400/1460	1600/1660

Step Width A (mm)	Rise H (mm)	Wight KN	Support Loads	
			R1 (KN)	R2 (KN)
600	3000	57	46	41
	3500	60	49	44
	4000	64	52	47
	4500	68	56	50
	5000	71	59	53
	5500	75	62	56
800	3000	59	52	47
	3500	63	56	50
	4000	67	60	54
	4500	71	64	57
	5000	74	68	60
	5500	82	74	66
1000	3000	86	78	69
	3500	63	59	53
	4000	67	64	57
	4500	71	68	61
	5000	75	73	65
	5500	83	79	71
	5500	87	84	75
	6000	92	88	79

Detail E (by others)



Detail M



Remark:

1. All dimensions are based on mm;
2. If add horizontal step in must add the horizontal length correspondingly;
3. When the width of step A=600, the truss must be extended by 420;
4. Pit depth will be 1450 for outdoor escalator.

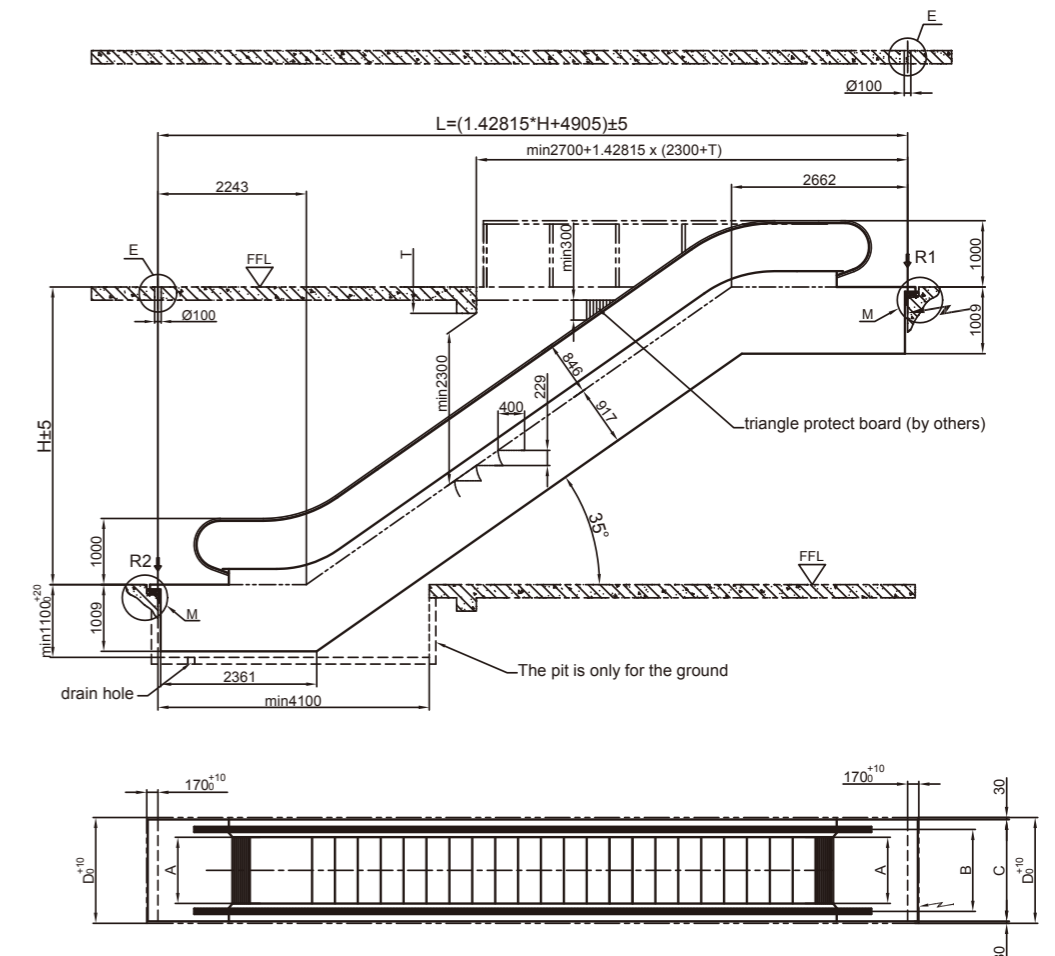
• KYS/C 235 Commercial Escalator | Drawing

Rise:
Max. 6000

Incline :
35°

Horizontal Steps :
2

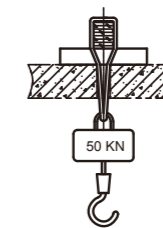
Step Width :
600/800/1000



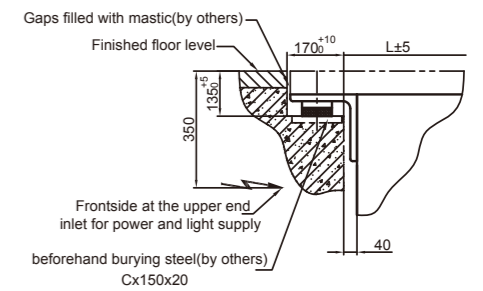
Model	KYS/C235-600	KYS/C235-800	KYS/C235-1000
A: Step Width	600	800	1000
B: Handrail Center Distance	838/910	1038/1110	1238/1310
C: Width of Escalator	1140/1200	1340/1400	1540/1600
D: Width of Pit	1200/1260	1400/1460	1600/1660

Step Width A (mm)	Rise H (mm)	Wight KN	Support Loads	
			R1 (KN)	R2 (KN)
600	3000	54	43	39
	3500	57	46	41
	4000	60	49	44
	4500	64	52	46
	5000	67	54	49
	5500	70	57	51
800	3000	56	49	44
	3500	60	52	47
	4000	63	56	50
	4500	66	59	53
	5000	70	62	56
	5500	73	65	59
1000	3000	76	69	61
	3500	60	56	50
	4000	64	60	53
	4500	67	64	57
	5000	71	67	60
	5500	74	71	64
	5500	82	77	69
	6000	85	81	72

Detail E (by others)



Detail M



Remark:

1. All dimensions are based on mm;
2. If add horizontal step in must add the horizontal length correspondingly;
3. When the width of step A=600, the truss must be extended by 420;
4. Pit depth will be 1450 for outdoor escalator.

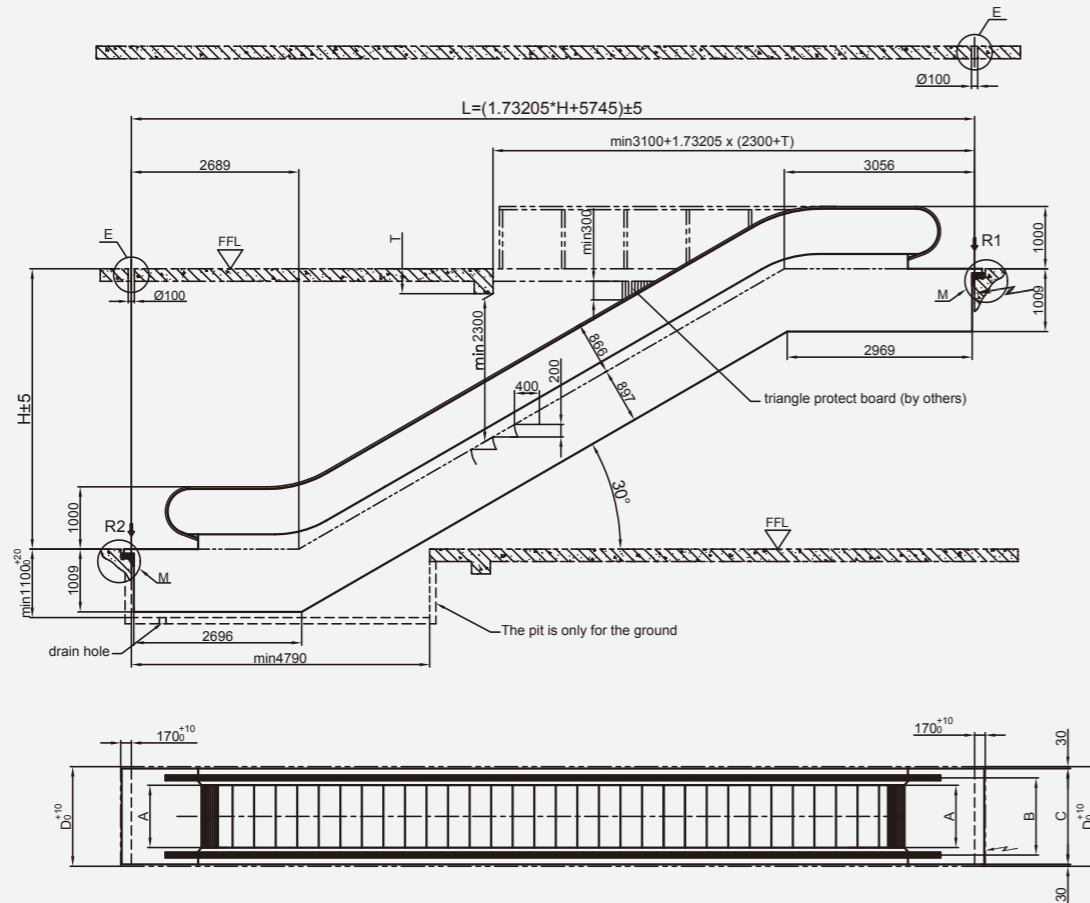
• KYS/C 330 Commercial Escalator | Drawing

Rise:
Max. 8000

Incline :
30°

Horizontal Steps :
3

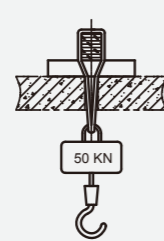
Step Width :
600/800/1000



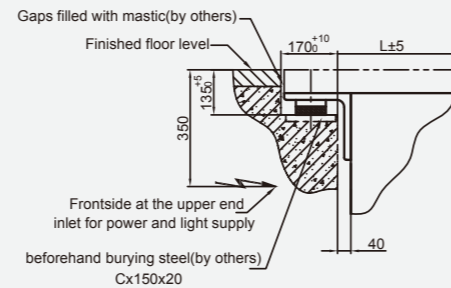
Model	KYS/C330-600	KYS/C330-800	KYS/C330-1000
A: Step Width	600	800	1000
B: Handrail Center Distance	838/910	1038/1110	1238/1310
C: Width of Escalator	1140/1200	1340/1400	1540/1600
D: Width of Pit	1200/1260	1400/1460	1600/1660

Step Width A (mm)	Rise H (mm)	Wight KN	Support Loads	
			R1 (KN)	R2 (KN)
600	3000	58	48	42
	3500	61	51	45
	4000	65	54	48
	4500	68	57	51
	5000	72	60	54
	5500	75	63	57
800	6000	78	66	60
	3000	61	55	49
	3500	65	58	53
	4000	68	62	56
	4500	72	65	60
	5000	76	69	63
1000	5500	82	74	68
	6000	86	78	72
	3000	65	62	56
	3500	69	66	61
	4000	73	70	65
	4500	79	76	70
	5000	83	80	74
	5500	90	87	79
	6000	94	91	83

Detail E (by others)



Detail M



Remark:

1. All dimensions are based on mm;
2. If add horizontal step in must add the horizontal length correspondingly;
3. When the width of step A=600, the truss must be extended by 420;
4. Pit depth will be 1450 for outdoor escalator.

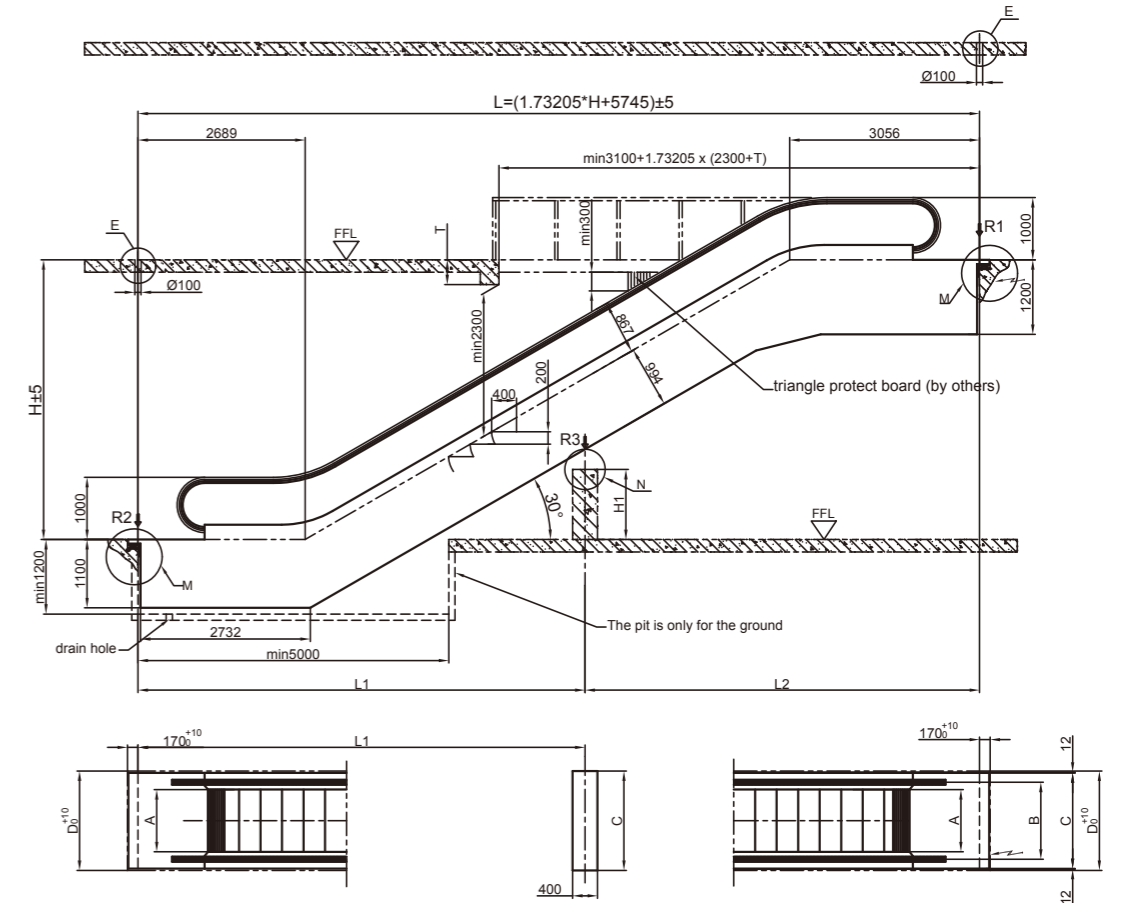
• KYXF/KYH 330 Public Transport Escalator | Drawing

Rise:
Max. 15000

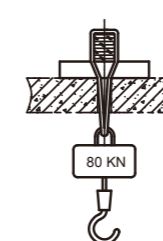
Incline :
30°

Horizontal Steps :
3

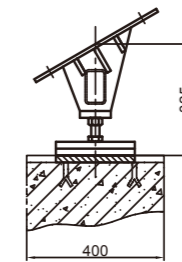
Step Width :
600/800/1000



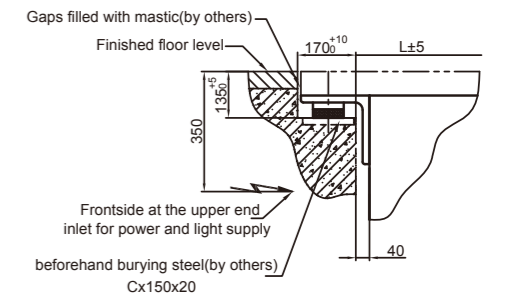
Detail E (by others)



Detail N



Detail M



Remark:

1. All dimensions are based on mm;
2. If add horizontal step in must add the horizontal length correspondingly;
3. When the width of step A=600, the truss must be extended by 420;
4. Pit depth will be 1500 for outdoor escalator.

Model	KYXF/KYH 330-600	KYXF/KYH 330-800	KYXF/KYH 330-1000
A: Step Width	600	800	1000
B: Handrail Center Distance	838	1038	1238
C: Width of Escalator	1200	1400	1600
D: Width of Pit	1260	1460	1660

Step Width	600	800	1000
R1 (KN)	4.1xL2+15.5	4.5xL2+16.1	5xL2+17.5
R2 (KN)	4.1xL1+7.8	4.5xL1+7.8	5xL1+8.5
R3 (KN)	4.25xL+9.5	4.5xL+10.5	5.2xL+11.5
Remarks	Unit for L / L1 / L2 is m, L1 / L2 are less than 15m		

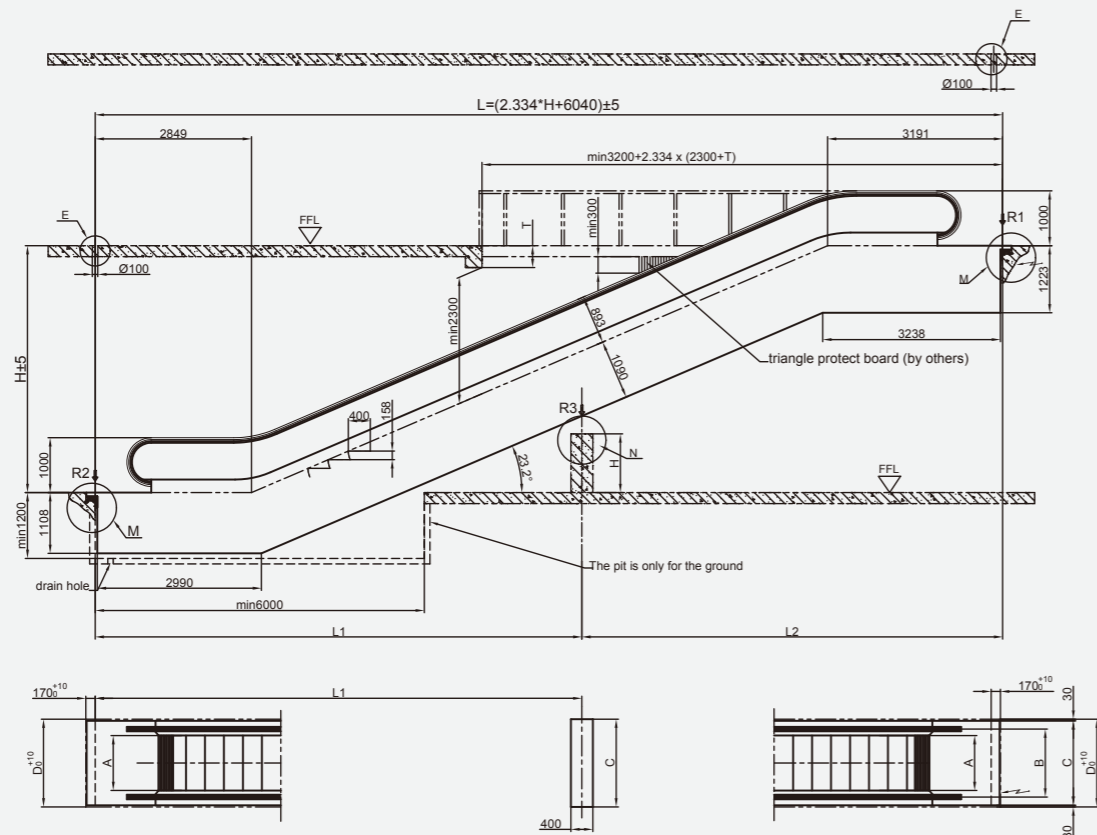
• KYXF/KYH 323 Public Transport Escalator | Drawing

Rise:
Max. 15000

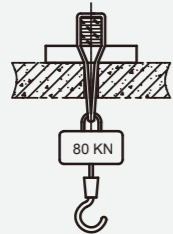
Incline :
23.2°

Horizontal Steps :
3

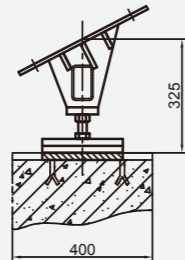
Step Width :
600/800/1000



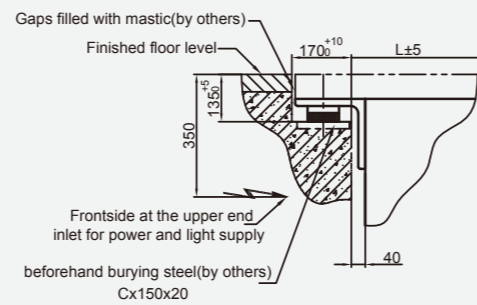
Detail E (by others)



Detail N



Detail M



Modle	KYXF/KYH 323-600	KYXF/KYH 330-800	KYXF/KYH 330-1000
A:Step Width	600	800	1000
B:Handrail Center Distance	838	1038	1238
C:Width of Escalator	1200	1400	1600
D:Width of Pit	1260	1460	1660

Step Width	600	800	1000
R1 (KN)	4.1xL2+19.5	4.5xL2+20.1	5xL2+21.5
R2 (KN)	4.1xL1+11.8	4.5xL1+11.8	5xL1+12.5
R3 (KN)	4.25xL+13.5	4.5xL+15.5	5.2xL+15.5
Remarks	Unit for L / L1 / L2 is m, L1 / L2 are less than 15m		

Remark:

- All dimensions are based on mm;
- If add horizontal step in must add the horizontal length correspondingly;
- When the width of step A=600, the truss must be extended by 420;
- Pit depth will be 1500 for outdoor escalator.

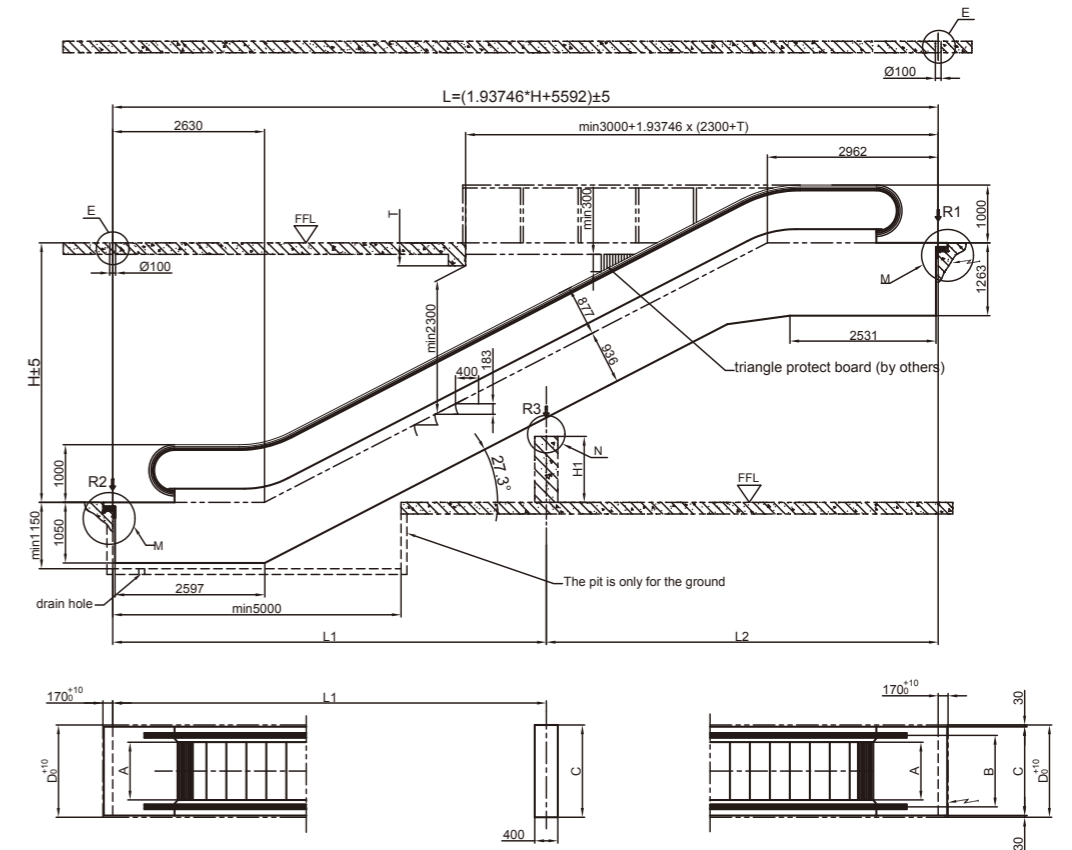
• KYXF/KYH 327 Public Transport Escalator | Drawing

Rise:
Max. 15000

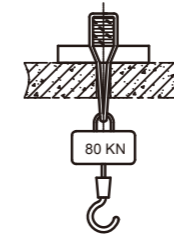
Incline :
27.3°

Horizontal Steps :
3

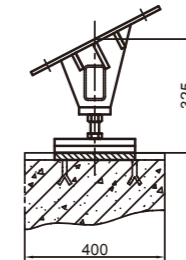
Step Width :
600/800/1000



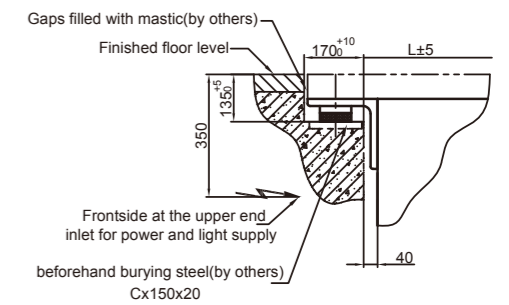
Detail E (by others)



Detail N



Detail M



Modle	KYXF/KYH 327-600	KYXF/KYH 327-800	KYXF/KYH 327-1000
A:Step Width	600	800	1000
B:Handrail Center Distance	838	1038	1238
C:Width of Escalator	1200	1400	1600
D:Width of Pit	1260	1460	1660

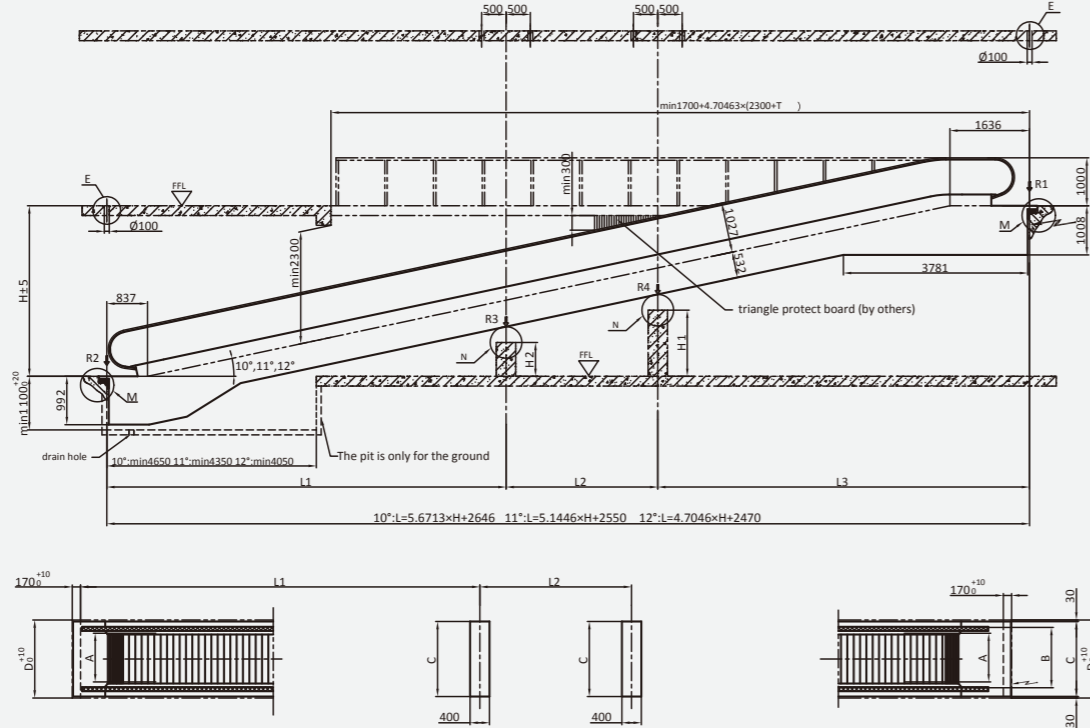
Step Width	600	800	11000
R1 (KN)	4.1xL2+17.5	4.5xL2+18.1	5xL2+19.5
R2 (KN)	4.1xL1+9.8	4.5xL1+9.8	5xL1+10.5
R3 (KN)	4.25xL+11.5	4.5xL+12.5	5.2xL+13.5
Remarks	Unit for L / L1 / L2 is m, L1 / L2 are less than 15m		

Remark:

- All dimensions are based on mm;
- If add horizontal step in must add the horizontal length correspondingly;
- When the width of step A=600, the truss must be extended by 420;
- Pit depth will be 1500 for outdoor escalator.

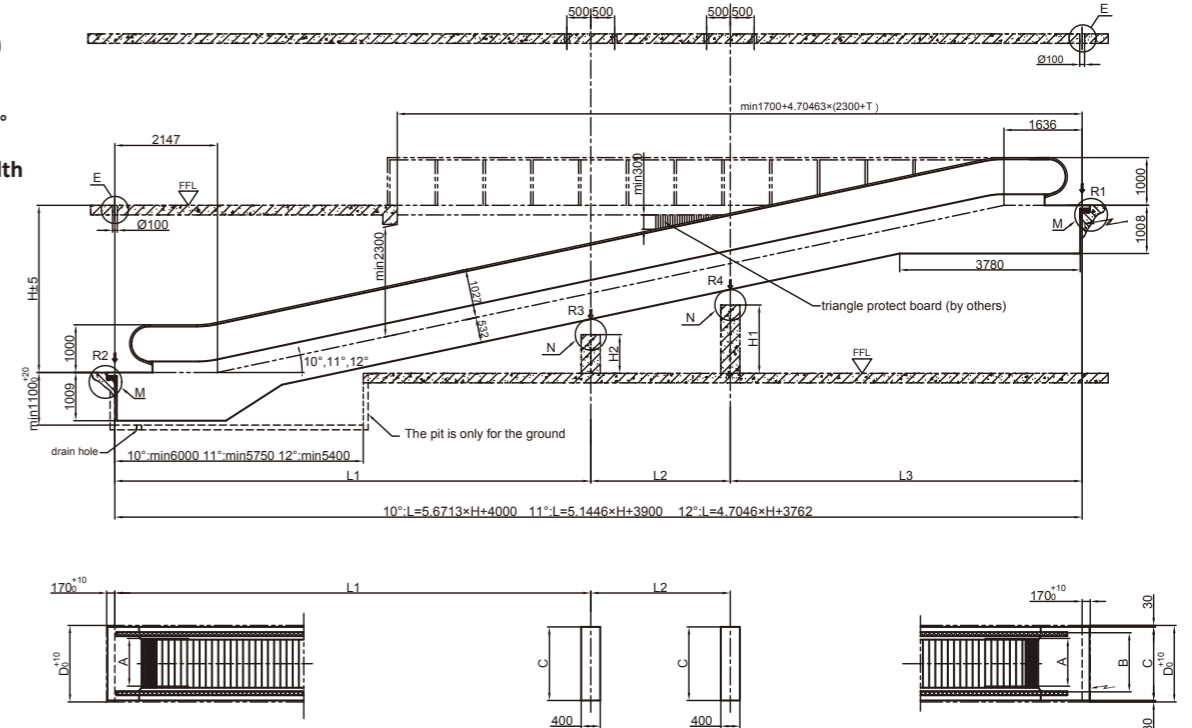
• KYP512 Commercial Passenger Conveyor | Drawing

Rise:
Max. 8000
Incline :
10° 11° 12°
Pallet Width
800/1000



• KYPF12 Commercial Passenger Conveyor | Drawing

Rise:
Max. 8000
Incline :
10° 11° 12°
Pallet Width
800/1000



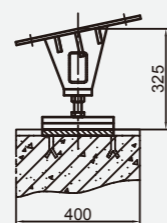
Model	KYP512-800	KYP512-1000
A:Pallet Width	800	1000
B:Handrail Center Distance	1038	1238
C:Width of Moving Walk	1340	1540
D:Width of Pit	1400	1600

Support Loads Parameter	q	M	N
800	0.0039	9.5	4.5
1000	0.0045	11	5

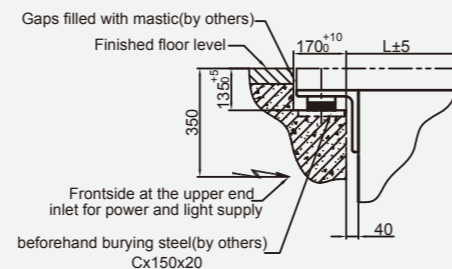
Inclination	Rise		Inte.Support	
	From	To	R3 (KN)	R4 (KN)
10°	1297	2178	-	-
	2179	4823	1	-
	4824	6000	1	1
11°	1449	2420	-	-
	2421	5335	1	-
	5336	6000	1	1
12°	1601	2663	-	-
	2664	5851	1	-
	5852	6000	1	1

Support Loads		
w/o Inte. Support (KN)	Single Inte. Support (KN)	Double Inte. Support (KN)
R1=Lxq+M	R1=L3xq+M	R1=L3xq+M
	R2=L1xq+N	R2=L1xq+N
R2=Lxq+N	R3=(L1+L2)x1.3xq	R3=(L1+L2)x1.3xq
	R4=(L3+L2)x1.3xq	R4=(L3+L2)x1.3xq
Note Unit for L1 / L2 / L3 are less than 15m		

Detail N



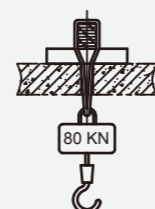
Detail M



Remark:

- All dimensions are based on mm;
- Pit depth will be 1450 for outdoor moving walk.

Detail E (by others)



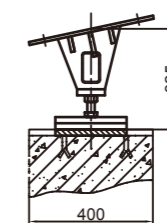
Model	KYPF12-800	KYPF12-1000
A:Pallet Width	800	1000
B:Handrail Center Distance	1038	1238
C:Width of Moving Walk	1340	1540
D:Width of Pit	1400	1600

Support Loads Parameter	q	M	N
800	0.0039	9.5	4.5
1000	0.0045	11	5

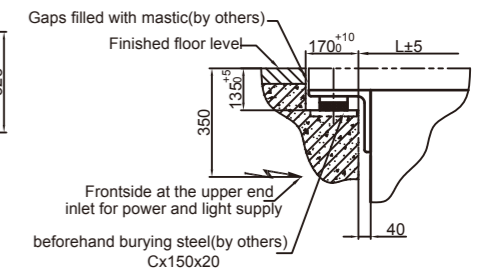
Inclination	Rise		Inte.Support	
	From	To	R3 (KN)	R4 (KN)
10°	1263	1792	-	-
	1793	4437	1	-
	4438	6000	1	1
11°	1393	1975	-	-
	1976	4891	1	-
	4892	6000	1	1
12°	1523	2160	-	-
	2161	5349	1	-
	5350	6000	1	1

Support Loads		
w/o Inte. Support (KN)	Single Inte. Support (KN)	Double Inte. Support (KN)
R1=Lxq+M	R1=L3xq+M	R1=L3xq+M
	R2=L1xq+N	R2=L1xq+N
R2=Lxq+N	R3=(L1+L3)x1.3xq	R3=(L1+L2)x1.3xq
	R4=(L3+L2)x1.3xq	R4=(L3+L2)x1.3xq
Note Unit for L1 / L2 / L3 are less than 15m		

Detail N



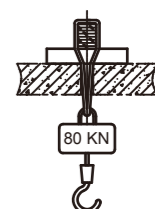
Detail M



Remark:

- All dimensions are based on mm;
- Pit depth will be 1450 for outdoor moving walk.

Detail E (by others)



• KYPHO Public Transport Passenger Conveyor | Drawing

Horizontal Length:

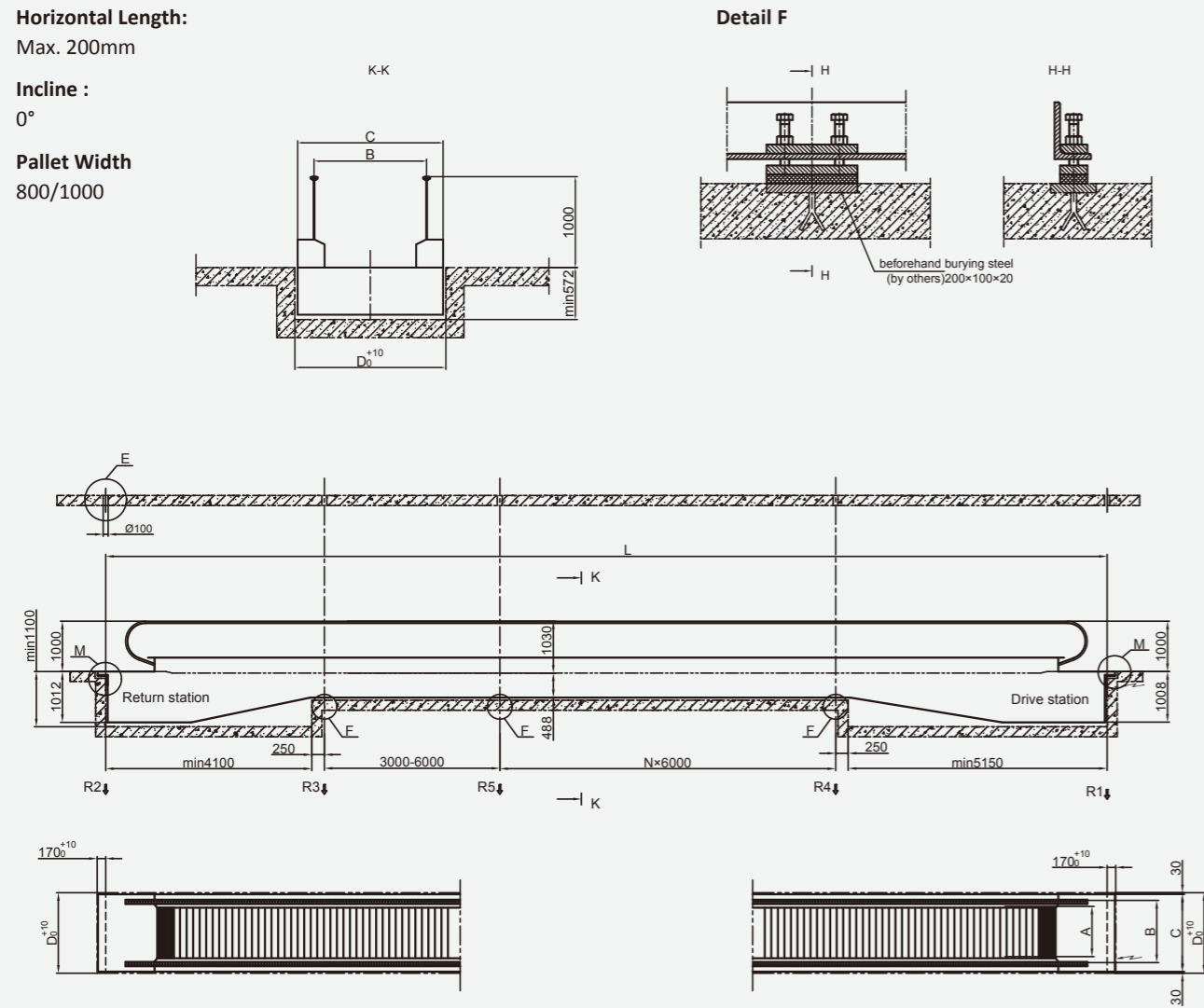
Max. 200mm

Incline :

0°

Pallet Width

800/1000



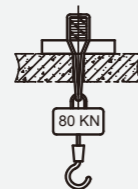
Modle	KYPHO-800	KYPHO-1000
A:Pallet Width	800	1000
B:Handrail Center Distance	1038	1238
C:Width of Moving Walk	1340	1540
D:Width of Pit	1400	1600

Pallet Width	800	1000
R1	45KN	49KN
R2	31KN	33KN
R3	30KN	32KN
R4	32KN	34KN
R5	44KN	53KN

Remark

1. All dimensions are based on mm;
2. Pit depth will be 1450 for outdoor moving walk.

Detail M



Detail E (by others)

